

2017 - 2018 IMPACT REPORT

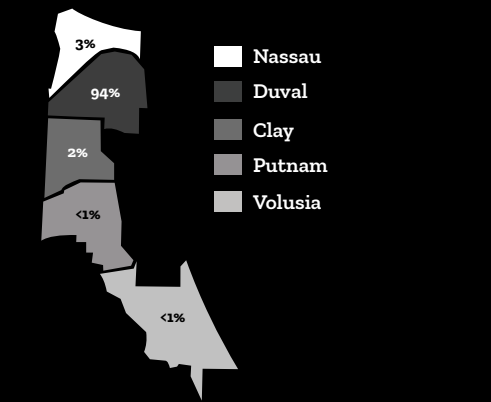
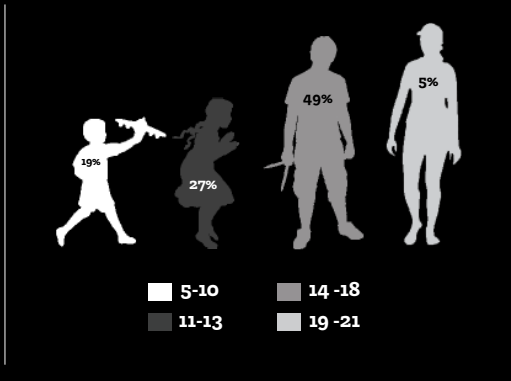
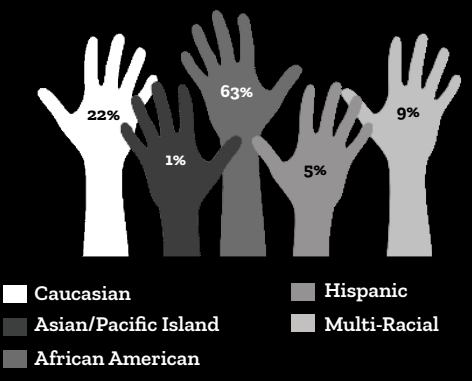
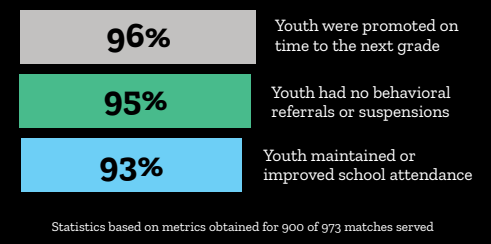
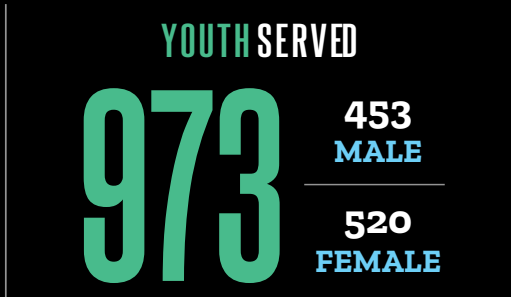


 **Big Brothers Big Sisters.**
OF NORTHEAST FLORIDA



THE CHILDREN WE IMPACTED IN 2017-18

Big Brothers Big Sisters of Northeast Florida's (BBBSNEFL) mission is to provide children facing adversity with strong and enduring, professionally supported one-to-one relationships that change their lives for the better, forever.

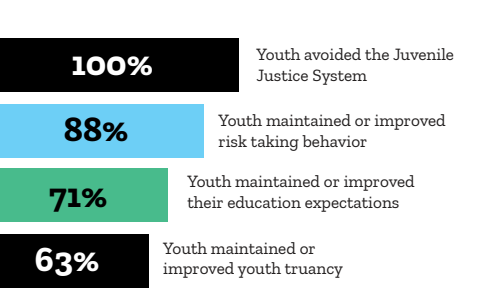


BBBSNEFL operates under the belief that inherent in every child is the ability to succeed and thrive in life. Through collaboration with schools and community organizations, we identify at-risk youth who need or want a mentor. By placing a caring adult in the life of a child, BBBSNEFL creates safe, high-quality, long-lasting mentoring relationships that help vulnerable youth beat the odds and reach their full potential through personal and academic achievement. Professionally supported by our staff, road-maps for success are developed in concert with parents, children, and mentors. We provide mentoring programs in multiple settings:

COMMUNITY BASED

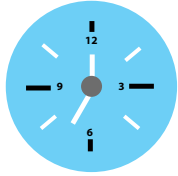


Community-Based allows Bigs and Littles to spend time in the community doing fun and interactive activities, working toward personal achievement and positive character development. To participate in the Community-Based program, Bigs commit to an average of 4-7 hours per month with their Little.



SCHOOL BASED

School-Based focuses on personal success and academic achievement through weekly mentoring sessions at the child's school. Bigs can enjoy activities such as helping littles with homework, sharing conversation, setting goals, and/or bonding over lunch.



8,645 MENTORING HOURS

Partnered with over **50** Duval County Public Schools

YOUTH SERVED

487

in partnership with:



99%

Youth avoided the Juvenile Justice System

91%

Youth had no behavioral referrals or suspensions

91%

Youth maintained or improved school attendance

74%

Youth maintained or improved their education expectations

BEYOND SCHOOL WALLS

Beyond School Walls (BSW) connects DCPS career academy students with local businesses from the same targeted industry. These strategic partnerships enrich the education and preparation of students by providing meaningful and relevant workplace experiences.

100%

Youth maintained or improved classroom behavior

98%

Youth maintained or improved school attendance

91%

Seniors graduated with post-secondary plans*

82%

Seniors graduated high school

* Post-secondary plans include 2/4-year college, trade school, workforce, and/or military

YOUTH SERVED

157

Managed **10** Beyond School Walls Programs

WHAT DOES THE CORPORATE COMMITMENT ADD UP TO?

57 MENTORING SESSIONS | **2,472** HOURS | **\$61,034*** IN TIME

DONATED TO OUR LOCAL COMMUNITY

*Estimated Value of Volunteer Time for 2017 (<https://independentsector.org/news-post/value-of-volunteer-time-release/>): \$24.69 per hour

PARTNERING HIGH SCHOOLS & BUSINESSES

2017-18 Career Academies

- **A. Philip Randolph** - Criminal Justice
- **Andrew Jackson** - Cyber Security
- **Atlantic Coast** - Information Technology/Digital Media
- **Baldwin Middle/Senior High** - Digital Communications
- **First Coast** - Global Logistics & Navy JROTC
- **Frank H. Peterson** - Advance Manufacturing
- **Raines** - Culinary Arts
- **Sandalwood** - Air Force JROTC & Information Technology



BIGS IN BADGES

Bigs in Badges (BIB) connects children with service men and women, building strong, trusting, and lasting relationships. This initiative helps create positive associations, builds stronger bonds, and increases trust within the community.

A leading agency in



*Per BBBSA's national listing dated June 2018



99%

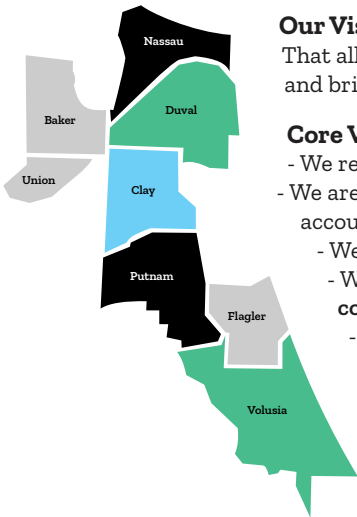
Youth avoided the Juvenile Justice System

Represented Entities:



163 MENTORS
Defended Potential

OUR PRIORITY GOALS PLANNING



Our Vision

That all children achieve success in life. Additionally, that we are creating better schools, stronger communities, and brighter futures for all through mentoring.

Core Values

- We recognize **child safety** and **high quality** programming is paramount.
- We are **committed** to creating **lasting long-term value** for our children and community and hold ourselves accountable to outcomes.
- We **value diversity** and inclusion.
- We believe **teamwork**, within Big Brothers Big Sisters of Northeast Florida (BBBSNEFL) and community **collaboration**, help deliver excellence. We **value** everyone who is a part of BBBSNEFL.
- We are a **learning organization**; we value **reflective practice** and strive toward better performance through **evaluation and innovation**.

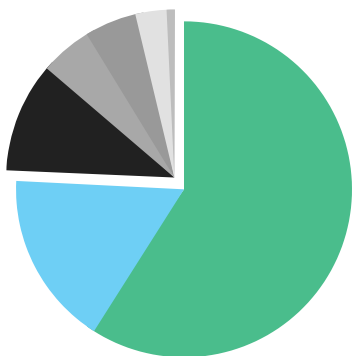
We're BIG All Over

Big Brothers Big Sisters of Northeast Florida has active matches currently in Nassau, Duval, Clay, Putnam and Volusia Counties including a service footprint reaching Baker, Flagler, and Union Counties.

Strategic Priorities

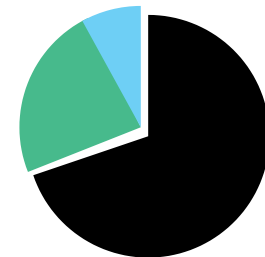
FOUNDATION	TRANSITION	GROWTH
Ensure the foundational elements of the organization, from operations to program, are strong, sustainable, and poised for advancement.	Transition program alignment to uniquely fill needs most relevant to our service communities, while bringing the greatest value.	Re-establish a growth pattern in all realms of the agency, inclusive of program reach, staff, Board development, and financial health.

FINANCIAL SUMMARY



SOURCES OF REVENUE

Grants	\$933,789	59%
Foundations	\$245,240	16%
Events	\$178,188	11%
Corporate	\$80,318	5%
In-Kind Donations	\$77,182	5%
Individual	\$52,721	3%
Misc. Income	\$5,827	<1%
Total Revenue	\$1,573,265	
Net Assets Released	\$77,799	
Total Support & Revenue	\$1,651,064	



ALLOCATION OF RESOURCES

Program	\$1,171,916	74%
Fundraising	\$220,307	14%
Administrative	\$194,588	12%
Total Cost of Resources	\$1,586,811	

STATEMENT FROM CEO



2017/2018 was an exciting year of transition that culminated in a restructured team, an enhanced strategic plan, and a refocusing around the urgency of mentoring. At Big Brothers Big Sisters, we feel strongly that potential exists in all youth. I am proud to say, working within the communities of Northeast Florida for over a century, we have effectively changed the lives of thousands through impactful mentoring programs and meaningful relationships. I am humbled to work alongside a dedicated team and Board who collaborate daily to defend, ignite, and inspire that potential, clearing the pathways to our youths' best possible future. - Sara Alford, CEO